

SM2 1.3 Function Notation

The graph of $y = f(x)$ is shown below. Use it to answer the following questions.

1. Find $f(-5)$.

2. Find $f(0)$.

3. Find $f(10)$.

4. Find $f(-6)$.

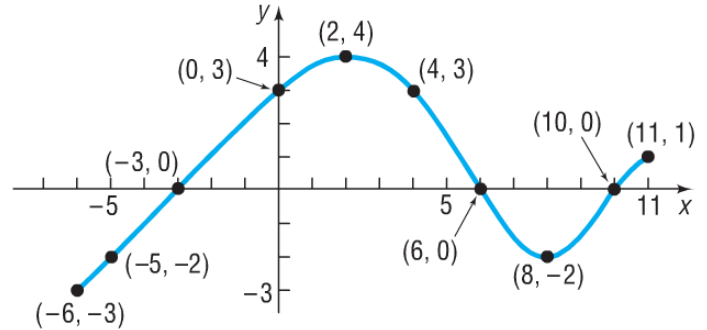
5. For what values of x is $f(x) = 0$?

6. For what values of x is $f(x) = -2$?

7. For what values of x is $f(x) = 3$?

8. What is the domain?

9. What is the range?



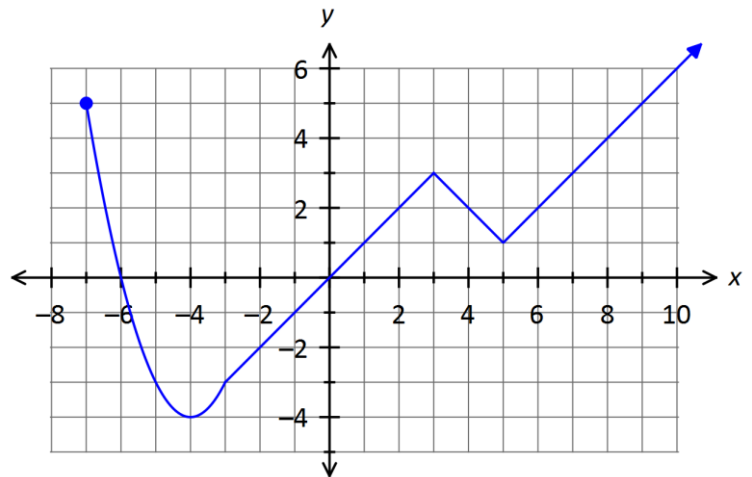
The graph of $y = g(x)$ is shown below. Use it to answer the following questions.

10. Find $g(-5)$.

11. Find $g(7)$.

12. For what value(s) of x is $g(x) = 0$?

13. For what value(s) of x is $g(x) = 5$?

14. What is the domain of g ?15. What is the range of g ?

Find each value if $f(x) = x^2 - 4x + 5$, $g(x) = 2x - 7$, and $h(x) = \frac{x}{3 - 2x}$.

Leave your answers as simplified fractions, if necessary. Show all your work.

16. $f(2)$

17. $g(-1)$

18. $h(4)$

19. $g(7)$

20. $f(-5)$

21. $h(-3)$

22. $h(10)$

23. $g(-\frac{1}{2})$

24. $f(-9)$