

Pre-calculus 2019-2020

3.3 Homework

Odd Answers 1- 45 and 50, 52, 53

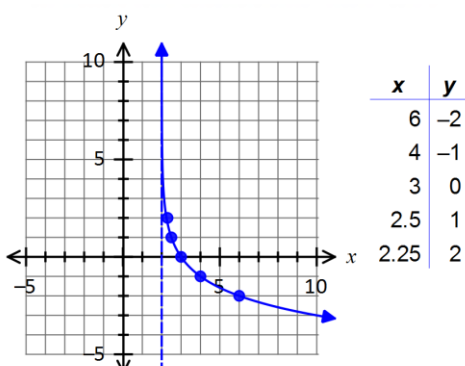
1. $\log_2 2.7 = 3$ 3. $\log_e M = 2.2$ 5. $2^3 = 8$ 7. $e^x = 5$
9. 4 11. -2 13. -13 15. 1 17. 6
19. $x+4$ 21. .5 23. $-2/3$ 25. -4 27. $1/5$
29. 14 31. 5 33. 0 35. $-7/2$
37. $\{x|x < 6\}$ or $(-\infty, 6)$ 39. B 41. D 43. A 45. E

50. Domain: $(2, \infty)$

Range: $(-\infty, \infty)$

Vertical Asymptote: $x=2$

$$x = \left(\frac{1}{2}\right)^y + 2$$

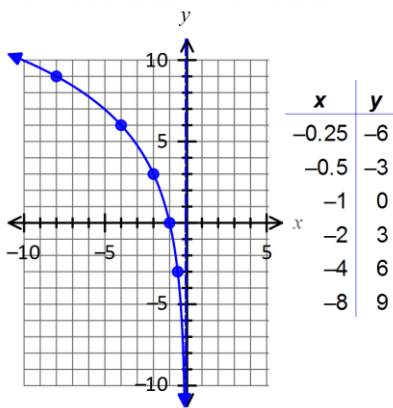


53. Domain: $(-\infty, 0)$

Range: $(-\infty, \infty)$

Vertical Asymptote: $x=0$

$$x = -2^{y/3}$$



52. Domain: $(0, \infty)$

Range: $(-\infty, \infty)$

Vertical Asymptote: $x=0$

$$x = \frac{1}{2} \cdot 4^{-y}$$

